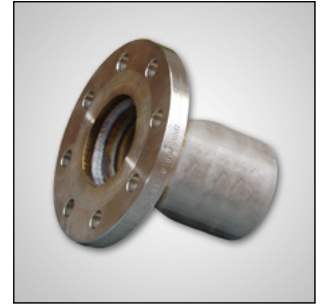


Flange Couplings

Fixed Flanges ASA or DIN or TTMA or JIS

- Size:** 1" to 12"
Material: Carbon Steel / Stainless Steel
Ferrule: Carbon / Stainless Steel



Floating Flanges ASA or DIN or TTMA or JIS

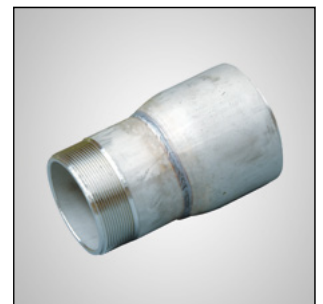
- Size:** 1" to 12"
Material: Stub End Carbon Steel / Stub End Stainless Steel / Stub End Brass / Stub End Polypropylene / Flange Carbon Steel / Flange Stainless Steel / Flange Polypropylene
Ferrule: Carbon / Stainless Steel



Threaded Couplings

Male threaded nipple NPT or BSP

- Size:** 1" to 8"
Material: Carbon Steel / Stainless Steel / Aluminium / Brass / Polypropylene
Ferrule: Carbon / Stainless Steel



Female threaded swivel nut coupling NPT or BSP

- Size:** 1" to 8"
Material: Carbon Steel / Stainless Steel / Aluminium / Brass / Polypropylene
Ferrule: Carbon / Stainless Steel



All Gutteling end fittings are reusable and are assembled according Gutteling unique swaging method with GCH Epoxy. Fittings in other material combinations or to customer's specifications are available on request.