

Pressure Control Valves

Back Pressure Regulators UV 6906

Diaphragm Controlled for „Low Flow“



Technical Data

Connection G / NPT	1/4
Inlet Pressure	0 - 20 bar
max rated pressure	up to 50 bar
K _{vs} -Value	0.09 m ³ /h
C _{vs} -Value	0.1 US gal/min.
Medium	liquids and gases

Description

Self-acting back pressure regulators are simple control valves offering accurate control while being easy to install and maintain. They control the pressure upstream of the valve without requiring pneumatic or electrical control elements.

The UV 6906 backpressure regulator is a diaphragm-controlled spring-loaded proportional control valve for set pressures up to 20 bar. The especially developed Inconel X750 diaphragm lasts at least 50% longer than typical stainless steel designs. Body and spring cap are made of stainless steel (316) featuring excellent corrosion resistance.

The inlet pressure to be controlled is balanced across the valve seat by the force of the valve spring (set pressure). If the inlet pressure rises above the set pressure, the valve opens. With decreasing inlet pressure the valve control orifice reduces, when the pipeline is depressurised, the valve is closed. Turning the handwheel clockwise increases the inlet pressure.

Standard

- » 316SS body and spring cap
- » Nylon handwheel
- » bubble tight at max. working pressure (tested with Nitrogen)

Options

- » counter nut for panel-mounting
- » special versions on request

Application

- » gas, fuel and liquid analyzer systems
- » blanketing applications
- » laboratories & research labs
- » portable calibration kits
- » medium pressure reactor vessels
- » instrument air lines

Operating instructions, know how and safety instructions must be observed. All the pressure has always been indicated as overpressure. We reserve the right to alter technical specifications without notice.



Kvs Value [m ³ /h]	Cvs Value [US gal/min.]	
0.09	0.1	
Setting Ranges [bar]		
0 - 5	0 - 10	0 - 20

Pressure Control Valves

Back Pressure Regulators UV 6906

Diaphragm Controlled for „Low Flow“



Materials

Body, Spring Cap	CrNiMo-steel
Main Valve Pin	CrNiMo-steel
Spring	Inconel X750
Loading Spring	CrNi-steel
Valve Seal	PEEK or PCTFE
Diaphragm	Inconel X750
Diaphragm Washer	Brass
O-Rings	Viton
Handwheel	Nylon
Adjusting Screw	Ali Bronze

Dimensions [mm]

A	50
B	15
C _{min}	117.6
C _{max}	129.6
D	55
E	34
G	22.2

Weights [kg]

0.9

Customs Tariff Number

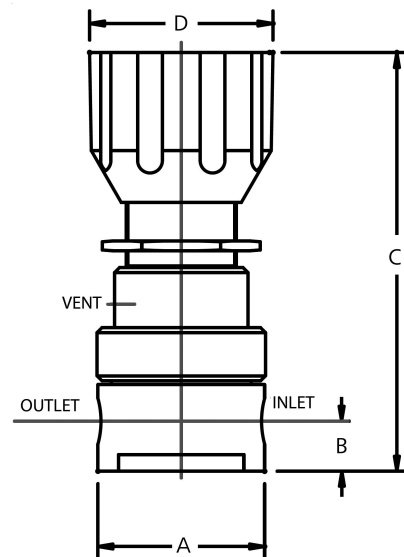
84814010

Special designs on request.

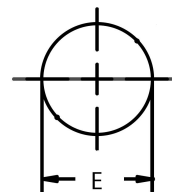
The pressure has always been indicated as overpressure.

Mankenberg reserves the right to alter or improve the designs or specifications of the products described herein without notice.

Dimensional Drawing



panel mounting



base mounting

